



Robert Frost Middle School Parent Orientation

Mrs. Levey, Principal

Mr. Ramonetti, Associate Principal

Mr. Moran, Associate Principal

Ms. Archer, Curriculum Associate

AGENDA / TOPICS TO BE COVERED

Who's Who

Middle School Philosophy

Keys to Success

Schedule and Courses

School Policies/Resources


Summary

Question and Answer Period



The 7 essential elements of standards-focused middle-level school programs are:

1. A philosophy and mission that reflect the intellectual and developmental needs and characteristics of young adolescents.
2. An educational program that is comprehensive, challenging, purposeful, integrated, and standards-based.
3. An organization and structure that support both academic excellence and personal development.

- 
- A silver metal spiral binding is visible on the left side of the page, looping through a series of holes. The page itself is white with a dark red background for the text area.
4. Classroom instruction appropriate to the needs and characteristics of young adolescents provided by skilled and knowledgeable teachers.
 5. Strong educational leadership and a building administration that encourages, facilitates, and sustains involvement, participation, and partnerships.
 6. A network of academic and personal support available for students.
 7. Professional training and staff development that are ongoing, planned, purposeful, and collaboratively developed


“This We Believe”

National Middle School Association

- Educators committed to young adolescents
- A shared vision
- High expectations for all
- An adult advocate for every student
- Family and community partnerships
- A positive school climate

WE BELIEVE THAT EVERY YOUNG ADOLESCENT...

- has the capacity to learn, grow, and develop into a knowledgeable, reflective, caring, ethical, and contributing citizen.
- must have access to the very best programs and practices a school can offer.
- must be engaged in learning that is relevant, challenging, integrative, and exploratory.

- 
- A silver metal spiral binding is visible on the left side of the page, looping through a series of holes. The page itself is white with a dark red background for the text area.
- thrives academically, socially, and emotionally in a democratic learning environment where trust and respect are paramount and where family and community are actively involved.
 - faces significant life choices and needs support in making wise and healthy decisions.
 - deserves educators who are prepared to work with this age group, who are themselves lifelong learners and committed to their own ongoing professional development and growth.

Characteristics of Young Adolescents

<http://www.nmsa.org/Advocacy/FundamentalsPresentation/tabid/793/Default.aspx#>

Resources:

www.nysed.gov

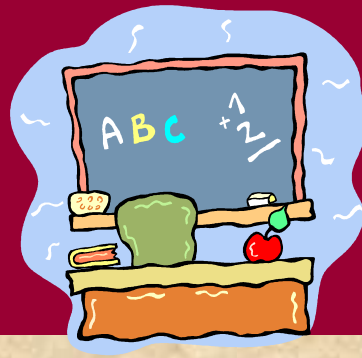
(New York State Education Department)

www.nmsa.org

(National Middle School Association)

ACADEMIC TEAMING

Each sixth grade student is assigned to a team of teachers. These teachers meet every day to discuss how to best help and educate your children. Teachers are available for team meetings throughout the year.



GUIDANCE DEPARTMENT

SCHOOL COUNSELORS

Ms. McQuilkin

Ms. Meckley

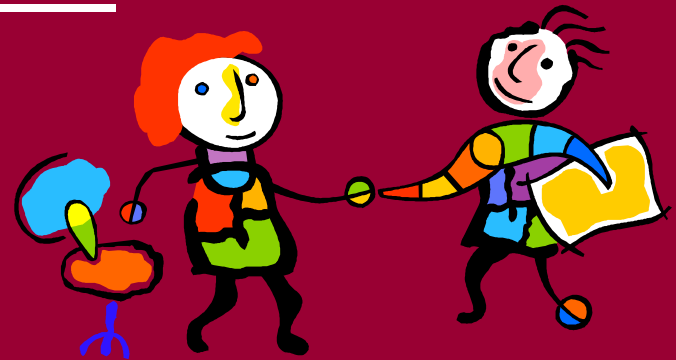
Ms. Splendorio

PPS STAFF

Dr. Marchon - School Psychologist

Ms. Correa - Social Worker

Ms. Millis – Social Worker



EXTRA-CURRICULAR ACTIVITIES

Drama Club

Student Council

Golf Club

Kickline

Technology Club

Yearbook

Fashion Club

Spring Intramurals

Mindblasters Club

Art Innovators

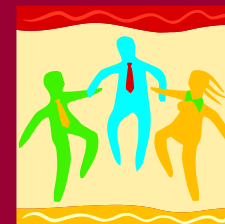
Newspaper Club

Step Squad

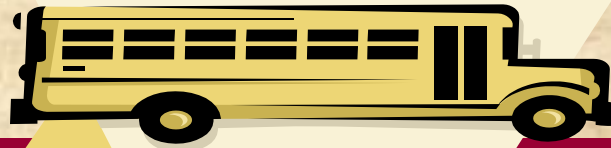
Variety Show

Writers Club

Environmental Club



TRANSPORTATION



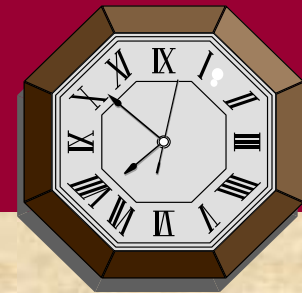
Buses Arrive by 7:50 A.M.

Buses Leave by 2:45 P.M.

Late Buses at 3:20 P.M.

Sports Buses at 5:00 P.M.

DAILY SCHEDULE



Homebase	8:00 am	8:08
Period 1	8:11	8:51
Period 2	8:54	9:34
Period 3	9:37	10:17
Period 4	10:20	11:00
Period 5	11:03	11:43
Period 6	11:46	12:26 pm
Period 7	12:29	1:09
Period 8	1:12	1:52
Period 9	1:55	2:35
After school clubs/extra help	2:40	3:20

Core Courses

English Language Arts

Social Studies

Science

Math

6th Grade Reading



ADDITIONAL COURSES

20 weeks

Physical Education

French, Spanish or Italian

Music

10 weeks

Home and Careers

Art

Business Communications

Health



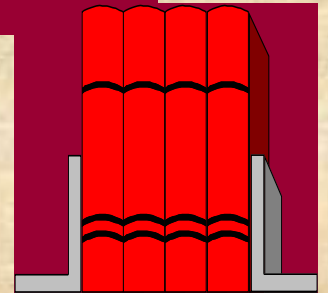
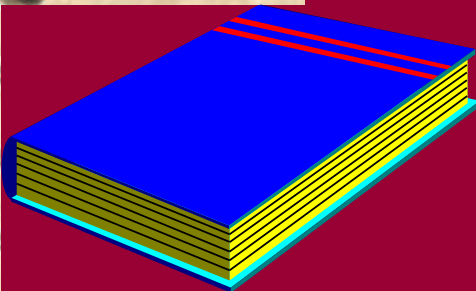
Sample 6th Grade Schedule

	Class	Notes
1	ELA	Double period
2	ELA	
3	SS	
4	Math	
5	Science	
6	Lunch	
7	Health/H&C/Art/ECA	10 week blocks
8	PE/Music	Alt. day
9	LOTE/Reading	3 languages and reading (alt day)

SCHOOL POLICIES

RESOURCES

- ✓ Agenda Book
- ✓ District Website
- ✓ District Calendar
- ✓ Parent/Student Information Booklet



New York STATE ASSESSMENTS

ELA - May 2012

Math - May 2012

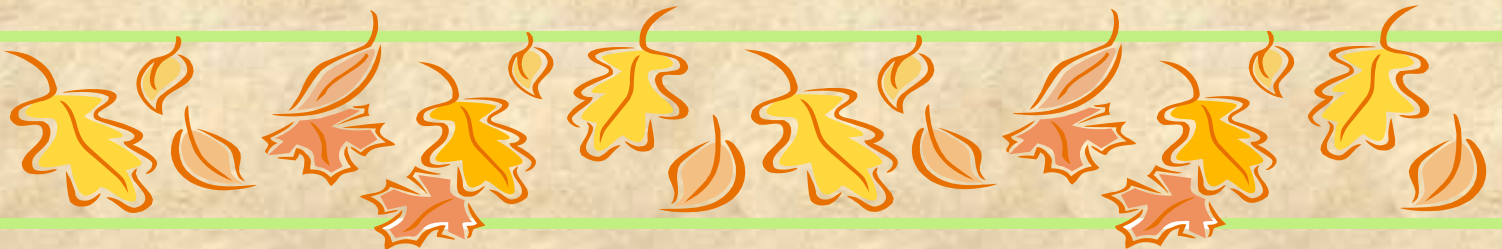


For more information about the
NYS assessments, please visit
www.nysed.gov

WELCOME TO RFMS!

We welcome you to the
Robert Frost Middle School and hope
that your years with us will be
enjoyable and successful.

See you in September!





QUESTION & ANSWER PERIOD

